

# CORPORATE DATA

(As of April, 2026)

***Yurtec***

*YURTEC CORPORATION*

# Profile

---

## Outline of Company

---

Establishment: October 1944

Paid-up Capital: ¥7,803,900,000  
(Listed in the Prime Market of TSE)

Head Office Address:  
4-1-1 Tsutsujigaoka, Miyagino-ku, Sendai  
Miyagi 983-8622, Japan

Phone: +81 (0)22 296 2111

Fax: +81 (0)22 296 2121

Website: <https://www.yurtec.co.jp/>

Domestic bases: 77 bases

Overseas bases: 4 bases

Affiliated Companies: 16 companies

Number of Employees in fiscal 2024: 3,811 people

## Licensed & Registered Activities

---

- (1) Licensed Activities under Contractors Law  
civil engineering, building, plastering,  
scaffolding, earthwork and concrete, roofing,  
electrical works, plumbing, steel structures,  
paving, dredge, painting, waterproofing,  
interior finishing works, telecommunication,  
water works, fire extinguishers
- (2) Authorized Electrical Contraction Company
- (3) Authorized Surveying Company
- (4) Authorized First Class Architect Office

## Directors [As of April 1, 2026]

---

Representative Director & Chairman of the Board	Toshinori ABE
Representative Director & President, Chief Executive Officer	Ikumi KOBAYASHI
Representative Director & Senior Managing Executive Officer	Koji MIURA
Director	Akemi KATO
Director	Tadayuki TAMAI
Director	Chiharu SHIBATA
Director & Audit and Supervisory Committee Member	Takeshi SATO
Director & Audit and Supervisory Committee Member	Koichi ONO
Director & Audit and Supervisory Committee Member	Yasunari TAKAURA
Director & Audit and Supervisory Committee Member	Tokuko YASHIMA

---

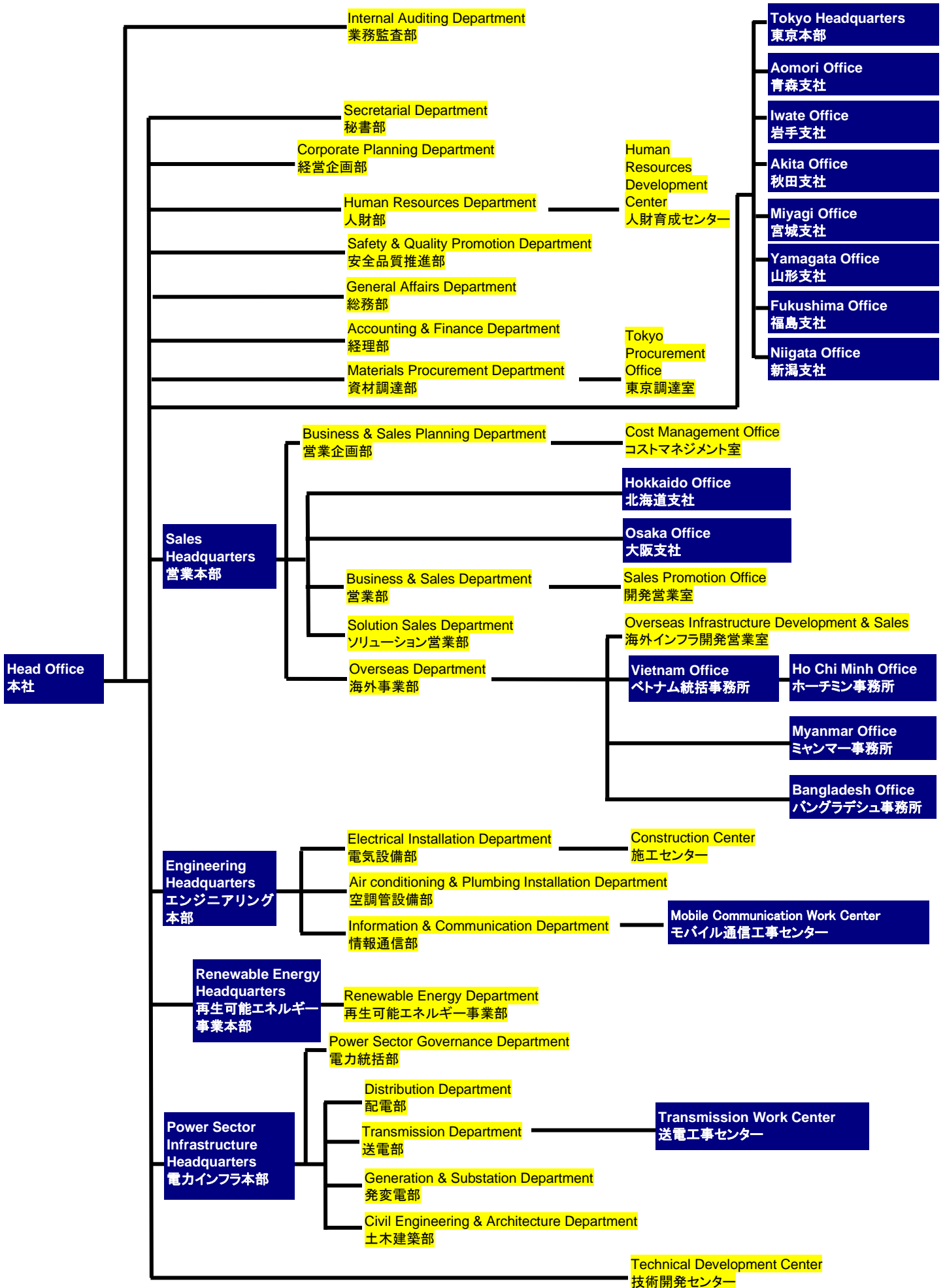
## History of Company

---

Oct.	1944	Established as the Tohoku Electrical Construction Co., Ltd.
Mar.	1958	Opened Tokyo Office (currently called as Tokyo Headquarters)
Apr.	1963	Established Training Center (currently called as Manpower Development Center)
Dec.	1971	Opened Sapporo Office (currently called as Hokkaido Office)
Mar.	1972	Established Transmission Work Center
Feb.	1976	Established Sales Headquarters
Apr.	1976	Organized Overseas Project Team (currently called as Overseas Department)
Dec.	1977	Listed in the second section of Tokyo stock exchange
Feb.	1981	Established Electric Power Headquarters (currently called as Power Sector Infrastructure Headquarters)
Sep.	1983	Listed in the first section of Tokyo stock exchange
Feb.	1990	Opened Osaka Office (currently called as Osaka Branch Office)
Feb.	1991	Established Yokohama Sales Office (currently called as Yokohama Branch Office)
Apr.	1991	Changed company name to Yurtec Corporation
Jun.	1992	Completion of New Head Office Building
Sep.	1995	Established Vietnam Office (currently called as Ho Chi Minh Office)
Apr.	1997	Established Hanoi Office (currently called as Vietnam Office)
Apr.	2000	Established Information & Communication Headquarters
Mar.	2006	Acquired Naming Rights of Sendai Stadium and renamed as “Yurtec Stadium”
Jan.	2011	Established Yurtec Vietnam Company Ltd.
Dec.	2012	Established New-Energy Resource Promotion Project (currently called as Renewable Energy Department)
Jun.	2016	Established Myanmar Office
Jun.	2021	Consolidated Sales Headquarters and Information & Communication Headquarters, and restructured as Sales Headquarters and Engineering Headquarters
Jun.	2021	Made Sigma Engineering JSC in Vietnam a wholly-owned subsidiary company
Apr.	2022	Listed in the Prime Market of the Tokyo Stock Exchange
Apr.	2023	Established Mobile Communication Work Center
Jul.	2023	Established Renewable Energy Headquarters

---

# Head Office Organization



# Business Scope

Scope of business includes planning, designing, construction, maintenance and consulting activities covering both general and electric power-related fields.

## GENERAL FIELD

### Electrical

- Substation facilities
- Independent power plant
- Photovoltaic power generation
- Wind power generation
- Cogeneration system
- Batteries
- Uninterruptible power supply system
- Motive power supply
- Monitoring and controlling systems
- Illumination equipment and power outlets
- Automobile traffic control systems
- Road-heating equipment and facilities
- Building automation equipment
- Office automation equipment
- Home automation equipment
- Factory automation equipment
- Street lights

### Instrumentation

- Panels and instruments
- Cabling and wiring
- Piping work

### Air Conditioning

- Air-conditioning systems
- Air-flow control systems
- Ventilation systems
- Smoke extraction systems
- Clean rooms
- Freezers, refrigerators
- Heat-Pump systems
- Deodorizing

### Plumbing and Sanitary Facilities

- Water supply
- Hot water supply
- Drainage
- Sanitary facilities
- Kitchen facilities
- Gas supply facilities

### Water Processing

- Drinking water purifying
- Domestic sewage drain system
- Industrial sewage drain system
- Septic tank
- Semi-processed water supply

### Disaster and Theft Prevention

- Sprinklers and chloral hydrate atomizers
- Indoor and outdoor fire extinguishers
- Carbon dioxide fire extinguishers
- Automatic fire alarm system
- Fire and smoke prevention doors and barriers
- Emergency alarm and illumination systems
- Gas leakage detectors
- Burglar alarm systems
- Monitor cameras
- Emergency power sources, wireless communications
- Lightning protection

### Information and Communications Systems

- Optical-fiber network
- PBX systems
- Wireless communication systems
- CATV
- Radio wave interference survey
- TV monitoring/surveillance systems
- Mobile-phone and PHS
- Microwave communications
- Earthquake Warning system
- Network system

### Civil Engineering

- Land Development
- Common cable trench
- Information box facilities
- Drainage system
- Drainage system for agriculture and fisheries
- Telecomm. related work
- Various facilities
- Flow-rate survey
- Geological survey

### Architecture

- Factories
- Warehouses
- Office buildings
- Shops and stores
- Other buildings
- Installation of signboards

## ELECTRIC POWER-RELATED EQUIPMENT AND FACILITIES

### Distribution Lines

- Pole erection
- Stringing
- Pole dressing/assembling
- Uninterruptible line work
- Installation of conductor protection pipes

### Transmission Lines

- Tower foundation work
- Tower assembly
- Stringing
- Optical-fiber combined GW
- Tower designing
- Soil survey and analysis
- Electromagnetic induction influence survey
- Land acquisition

### Underground Power Lines

- Manholes
- Conduit lines
- Underground duct
- Cable laying, connection

### Power Generating Plant & Substation Facilities

- Survey and design
- Gantry structure assembly and stringing
- Installation and tests
- Remote supervisory control system
- Cable laying, connection
- Installation and tests of control and relay panels
- Inspection, maintenance

### Electric Power-Related Civil Engineering Work

- Hydro power plant civil engineering work
- Substation foundation work
- Plant site preparation
- Water flow survey
- Soil survey

### Electric Power-Related Architecture

- Power generation plant buildings
- Substation buildings
- Office buildings
- Building inspection and maintenance

## COMMODITY SALES

### Electric Machines and Materials

- Heat-pump system electrical water heater (Eco-Cute)
- IH cooking heater
- Heat-pump system air-conditioners
- Others